

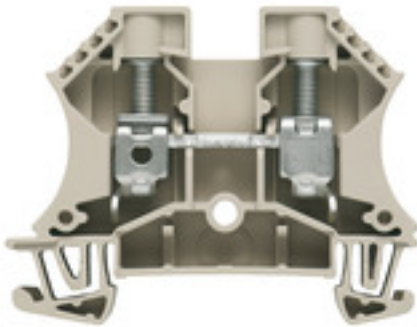
WDU 10**Weidmüller Interface GmbH & Co. KG**

Klingenbergstraße 26

D-32758 Detmold

Germany

www.weidmueller.com

Product image

To feed through power, signal, and data is the classical requirement in electrical engineering and panel building. The insulating material, the connection system and the design of the terminal blocks are the differentiating features. A feed-through terminal block is suitable for joining and/or connecting one or more conductors. They could have one or more connection levels that are on the same potential or insulated against one another.

General ordering data

| | |
|------------|--|
| Version | Feed-through terminal, Screw connection, 10 mm ² , 1000 V, 57 A, dark beige |
| Order No. | 1020300000 |
| Type | WDU 10 |
| GTIN (EAN) | 4008 190068868 |
| Qty. | 50 pc(s). |

Creation date February 7, 2023 2:32:39 PM CET

Catalogue status 03.02.2023 / We reserve the right to make technical changes.

WDU 10

Weidmüller Interface GmbH & Co. KG

Klingenbergstraße 26

D-32758 Detmold

Germany

www.weidmueller.com

Technical data

Dimensions and weights

| | | | |
|--------------------------|------------|----------------|------------|
| Depth | 46.5 mm | Depth (inches) | 1.831 inch |
| Depth including DIN rail | 47 mm | Height | 60 mm |
| Height (inches) | 2.362 inch | Width | 9.9 mm |
| Width (inches) | 0.39 inch | Net weight | 16.9 g |

Temperatures

| | | | |
|----------------------------------|----------------|----------------------------------|---|
| Storage temperature | | Operating temperature range | For operating temperature range see EC Design Test Certificate / IEC Ex-Certificate of Conformity |
| | -25 °C...55 °C | | |
| Continuous operating temp., min. | -60 °C | Continuous operating temp., max. | 130 °C |

Material data

| | | | |
|---------------------------|-------|--------|------------|
| Material | Wemid | Colour | dark beige |
| UL 94 flammability rating | V-0 | | |

Rating data IECEx/ATEX

| | | | |
|--------------------------------|---|---------------------------------|--------------------|
| Certificate No. (ATEX) | DEMKO14ATEX1338U | Certificate No. (IECEX) | IECEXULD14.0005U |
| Max. voltage (ATEX) | 690 V | Current (ATEX) | 57 A |
| Wire cross section max. (ATEX) | 10 mm ² | Max. voltage (IECEX) | 690 V |
| Current (IECEX) | 57 A | Wire cross section max. (IECEX) | 10 mm ² |
| Operating temperature range | For operating temperature range see EC Design Test Certificate / IEC Ex-Certificate of Conformity | Marking EN 60079-7 | |
| Ex 2014/34/EU label | II 2 G D | | Ex eb II C Gb |

System specifications

| | | | |
|-------------------------------------|---|-------------------------------|-----|
| Version | Screw connection, for screwable cross-connection, One end without connector | End cover plate required | Yes |
| Number of potentials | 1 | Number of levels | 1 |
| Number of clamping points per level | 2 | Number of potentials per tier | 1 |
| Levels cross-connected internally | No | PE connection | No |
| Rail | TS 35 | N-function | No |
| PE function | No | PEN function | No |

2 clampable conductors (H05V/H07V) with equal cross-section (rated connection)

| | | | |
|--|---------------------|--|---------------------|
| Cross-section for connected wire, solid, two clampable wires, max. | 6 mm ² | Cross-section for connected wire, solid, two clampable wires, min. | 0.5 mm ² |
| Cross-section for connected wire, stranded, two clampable wires, max. | 6 mm ² | Cross-section for connected wire, stranded, two clampable wires, min. | 0.5 mm ² |
| Wire connection cross section, finely stranded with wire-end ferrules DIN 46228/1, 2 clampable wires, max. | 6 mm ² | Wire connection cross section, finely stranded with wire-end ferrules DIN 46228/1, 2 clampable wires, min. | 0.5 mm ² |
| Wire connection cross section, finely stranded, two clampable wires, min. | 0.5 mm ² | Wire cross-section, finely stranded, two clampable wires, max. | 6 mm ² |

WDU 10

Weidmüller Interface GmbH & Co. KG
 Klingenbergstraße 26
 D-32758 Detmold
 Germany

www.weidmueller.com

Technical data

Additional technical data

| | | | |
|--------------------------|-------|-----------------------------|---------|
| Explosion-tested version | Yes | Number of similar terminals | 1 |
| Open sides | right | Type of mounting | Snap-on |

CSA rating data

| | | | |
|-------------------------------|----------------|-------------------------------|-------|
| Certificate No. (CSA) | 200039-1057876 | Current size C (CSA) | 65 A |
| Voltage size C (CSA) | 600 V | Wire cross section max. (CSA) | 6 AWG |
| Wire cross section min. (CSA) | 18 AWG | | |

Conductors for clamping (rated connection)

| | | | | | |
|--|--|-------------------|---------------------|-----------------------|--------|
| Blade size | 1.0 x 5.5 mm | | | | |
| Clampable conductor | Connection specification | | Screw connection | | |
| | Cross-section for conductor connection | | Type | solid, H05(07) V-U | |
| | | | min. | 1.5 mm ² | |
| | | | max. | 16 mm ² | |
| | | | nominal | 10 mm ² | |
| | wire end ferrule | | Stripping length | min. | 12 mm |
| | | | | max. | 12 mm |
| | | | | nominal | 12 mm |
| | | | Tightening torque | min. | 1.2 Nm |
| | max. | 1.9 Nm | | | |
| | Recommended wire-end ferrule | | | | |
| | Connection specification | | Screw connection | | |
| | Cross-section for conductor connection | | Type | stranded, H07V-R | |
| | | | min. | 1.5 mm ² | |
| | | | max. | 16 mm ² | |
| | | | nominal | 10 mm ² | |
| | wire end ferrule | | Stripping length | min. | 12 mm |
| | | | | max. | 12 mm |
| | | | | nominal | 12 mm |
| | | | Tightening torque | min. | 1.2 Nm |
| | max. | 1.9 Nm | | | |
| | Recommended wire-end ferrule | | | | |
| | Connection specification | | Screw connection | | |
| | Cross-section for conductor connection | | Type | flexible, H05(07) V-K | |
| min. | | | 1.5 mm ² | | |
| max. | | | 16 mm ² | | |
| nominal | | | 10 mm ² | | |
| wire end ferrule | | Stripping length | min. | 12 mm | |
| | | | max. | 12 mm | |
| | | | nominal | 12 mm | |
| | | Tightening torque | min. | 1.2 Nm | |
| max. | 1.9 Nm | | | | |
| Recommended wire-end ferrule | | | | | |
| Clamping range, max. | 16 mm ² | | | | |
| Clamping range, min. | 1.31 mm ² | | | | |
| Clamping screw | M 4 | | | | |
| Connection cross-section, stranded, max. | 16 mm ² | | | | |
| Connection cross-section, stranded, min. | 1.5 mm ² | | | | |
| Connection direction | on side | | | | |

Creation date February 7, 2023 2:32:39 PM CET

WDU 10

Weidmüller Interface GmbH & Co. KG

Klingenbergstraße 26

D-32758 Detmold

Germany

www.weidmueller.com

Technical data

| | |
|---|---------------------|
| Gauge to IEC 60947-1 | B6 |
| Number of connections | 2 |
| Stripping length | 12 mm |
| Tightening torque, max. | 1.9 Nm |
| Tightening torque, min. | 1.2 Nm |
| Torque level with DMS electric screwdriver | 4 |
| Twin wire-end ferrules, max. | 6 mm ² |
| Twin wire-end ferrules, min. | 1.5 mm ² |
| Type of connection | Screw connection |
| Wire connection cross section AWG, max. | AWG 6 |
| Wire connection cross section AWG, min. | AWG 16 |
| Wire connection cross section, finely stranded, max. | 16 mm ² |
| Wire connection cross section, finely stranded, min. | 1.5 mm ² |
| Wire connection cross-section, finely stranded with wire-end ferrules DIN 46228/1, max. | 16 mm ² |
| Wire connection cross-section, finely stranded with wire-end ferrules DIN 46228/1, min. | 1.5 mm ² |
| Wire connection cross-section, finely stranded with wire-end ferrules DIN 46228/4, max. | 16 mm ² |
| Wire connection cross-section, finely stranded with wire-end ferrules DIN 46228/4, min. | 1.5 mm ² |
| Wire connection cross-section, solid core, max. | 16 mm ² |
| Wire connection cross-section, solid core, min. | 1.5 mm ² |

General

| | | | |
|---|-------|---|---------------|
| Rail | TS 35 | Standards | IEC 60947-7-1 |
| Wire connection cross section AWG, max. | AWG 6 | Wire connection cross section AWG, min. | AWG 16 |

Rating data

| | | | |
|--|--------------------|---------------------------------|---------------|
| Rated cross-section | 10 mm ² | Rated voltage | 1,000 V |
| Rated DC voltage | 1,000 V DC | Rated current | 57 A |
| Current at maximum wires | 76 A | Standards | IEC 60947-7-1 |
| Volume resistance according to IEC 60947-7-x | 0.56 mΩ | Rated impulse withstand voltage | 8 kV |
| Power loss in accordance with IEC 60947-7-x | 1.82 W | Pollution severity | 3 |

UL rating data

| | | | |
|---|--------|---|-------|
| Certificate No. (UR) | E60693 | Conductor size Factory wiring max. (UR) | 6 AWG |
| Conductor size Factory wiring min. (UR) | 18 AWG | Conductor size Field wiring max. (UR) | 6 AWG |
| Conductor size Field wiring min. (UR) | 18 AWG | Current size C (UR) | 65 A |
| Voltage size C (UR) | 600 V | | |

Creation date February 7, 2023 2:32:39 PM CET

Catalogue status 03.02.2023 / We reserve the right to make technical changes.

WDU 10

Weidmüller Interface GmbH & Co. KG

Klingenbergstraße 26

D-32758 Detmold

Germany

www.weidmueller.com

Technical data

Classifications

| | | | |
|-------------|-------------|-------------|-------------|
| ETIM 6.0 | EC000897 | ETIM 7.0 | EC000897 |
| ETIM 8.0 | EC000897 | ECLASS 9.0 | 27-14-11-20 |
| ECLASS 9.1 | 27-14-11-20 | ECLASS 10.0 | 27-14-11-20 |
| ECLASS 11.0 | 27-14-11-20 | ECLASS 12.0 | 27-14-11-20 |

Approvals

Approvals



| | |
|---------------------------|------------|
| ROHS | Conform |
| UL File Number Search | UL Website |
| Certificate No. (UR) | E60693 |
| Certificate No. (cURusEX) | E184763 |

Downloads

| | |
|---|--|
| Approval/Certificate/Document of Conformity | Attestation of Conformity IECEX Certificate CB Testreport CB Certificate EAC certificate DNVGL certificate NEMKO certificate INMETRO certificate Lloyds Register Certificate MARITREG Certificate POLSKIREJ certificate EAC EX Certificate CCC Ex Certificate UKCA Ex Certificate CE Declaration of Conformity ATEX Certificate CE Declaration of Conformity all terminals UKCA declaration of conformity |
| Engineering Data | CAD data – STEP |
| Engineering Data | WSCAD, Zuken E3.S |
| User Documentation | NTI_IECEX_WDU-WPE_10.pdf StorageConditionsTerminalBlocks |
| Catalogues | Catalogues in PDF-format |
| Brochures | |

Data sheet

WDU 10

Weidmüller Interface GmbH & Co. KG
Klingenbergstraße 26
D-32758 Detmold
Germany

www.weidmueller.com

Drawings

