

## Marking systems

### THM MMP

**Weidmüller Interface GmbH & Co. KG**  
 Klingenbergstraße 16  
 D-32758 Detmold  
 Germany  
 Fon: +49 5231 14-0  
 Fax: +49 5231 14-292083  
 www.weidmueller.com



#### MMP

The only printer you need for your marking tasks The THM MMP is a compact and modular thermal transfer printer that fully demonstrates its many advantages and high number of potential uses. The integrated cutting and perforation option enables continuous materials to be cut to any length – making your work considerably easier when it comes to cutting and assigning the respective labels. The printer edits markers and labels from the MultiMark family as well as continuous materials, textile and polyester labels, shrink-fit sleeves and PLC labels.

#### Your benefits with MultiMark

- One printer for all jobs
- Ideal for small and medium print volumes
- Nearly maintenance-free thanks to thermal transfer technology
- Good legibility (resolution: 300 dpi)
- Flexibility thanks to modular perforation and cutting unit
- The print roller can be changed in 30 seconds
- High output, 250 Dekafix markers/min.

#### General ordering data

Type	THM MMP
Order No.	<a href="#">2430920000</a>
Version	Marking systems, Thermotransfer printer, Thermotransfer, 300 dpi, MultiMark, Shrink-fit sleeves, Label reel
GTIN (EAN)	4050118440973
Qty.	1 pc(s).

## Marking systems

### THM MMP

**Weidmüller Interface GmbH & Co. KG**  
 Klingenbergstraße 16  
 D-32758 Detmold  
 Germany  
 Fon: +49 5231 14-0  
 Fax: +49 5231 14-292083  
 www.weidmueller.com

## Technical data

### Dimensions and weights

Width	253 mm	Width (inches)	9.961 inch
Height	320 mm	Height (inches)	12.598 inch
Depth	253 mm	Depth (inches)	9.961 inch
Weight	3.8 Kg	Net weight	5,800 g

### Labelling systems

Included in delivery	THM MMP, Manual, USB cable, Mains cable, Euro plug, US plug, UK plug, Printer driver, Software M-Print® PRO, RIBBON MM-TB 25/360 SW ink ribbon, RIBBON MM 110/360 SW ink ribbon, Ink ribbon core, Print roller, Pressure roller	Interface	USB, LAN
Marker type	MultiMark, Shrink-fit sleeves, Label reel	Operating system	Windows 7, Windows 8, Windows 8.1, Windows 10
Operation with rechargeable batteries	No	Print quality	300 dpi
Printer driver	Windows 7, Windows 8, Windows 8.1, Windows 10	Printing method	Thermotransfer
Printing speed	125 mm/s	Software	M-Print® PRO
Supply voltage	100...240 V AC	System requirements	PC with operating system Windows 7, 8 or 10
Type	THM MMP		

### Classifications

ETIM 5.0	EC000610	ETIM 6.0	EC000610
eClass 6.2	19-14-01-04	eClass 7.1	24-32-11-02
eClass 8.1	24-32-11-90	eClass 9.0	24-32-11-90
eClass 9.1	24-32-11-02		

### Approvals

ROHS	Conform
------	---------

### Downloads

Approval/Certificate/Document of Conformity	<a href="#">2430920000_DECLARATION_OF_CONFORMITY.pdf</a>
Product Change Notification	<a href="#">MultiMark_PCN_de_Extern</a> <a href="#">MultiMark_PCN_en_external</a>

# MultiMark in use

## Professional and user-friendly

### Marking: added value for every system

Standards and guidelines call for correct presentation and identification of installed components and associated documentation. The systematic use of MultiMark will put you on the right track to documenting your system in a meaningful way.

### User-friendly Usage and handling

The outstanding properties of the different marker types make it easy for you to use MultiMark as an all-purpose marking system. Durable material, strong adhesive labels, perforations – each and every detail has been carefully considered and subjected to extensive practical tests.

**Your benefits with MultiMark**

- 150 new marking products on offer
- Practically all identification requirements are taken care of
- Fast printing, fast Identification
- Handling benefits, e.g. for terminal markers
- Excellent material properties
- Convenient handling
- Clear print image



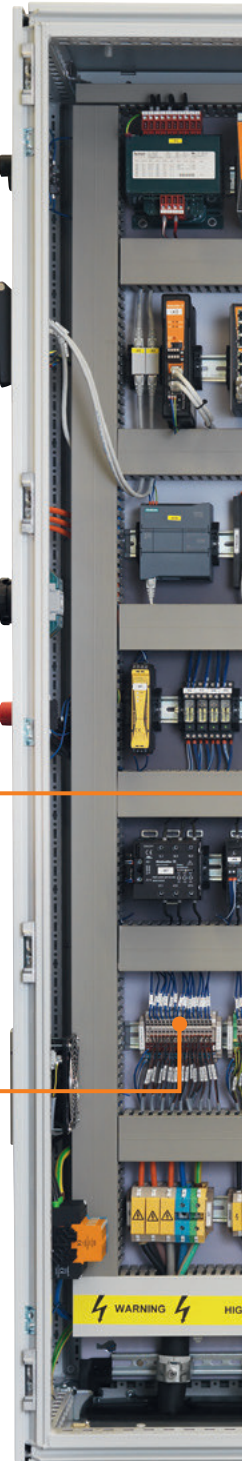
SM/CC: Eye-catching and highly adhesive equipment labels - ensure that devices are used correctly



DEK/WS: Flexible connector markers - print, clip, finished



WM: Wire markers installed without tools - simply edit your projects on a computer then print on a reel

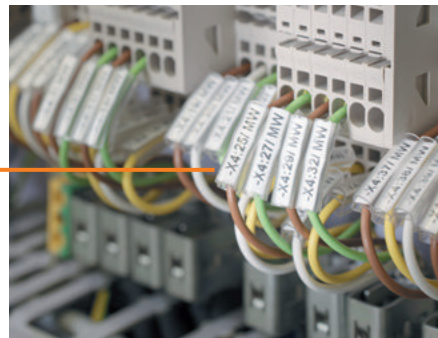




ESG: All-purpose equipment identification - simple labelling of markers for quick identification of components



SFX: Highly flexible cable markers - determine the maximum diameter from the length of the cable tie



TM-I: Plug-in wire markers - easy to install before and after the sleeve assembly



# OZNAKE MultiMark

**elektrosystem**  
komponente za elektrotehniku



DEK



WS



MF



TM-I



WM



SFX



THM WO



HS



HSS



CC



ESG



SM



SM 36



SM DIA



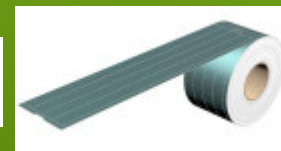
THM EL



KSW



THM ET



ELS



THM MT

